

# OPERATING INSTRUCTIONS



## VENEN ENGEL 6

ENGLISH



## PRELIMINARY REMARK

**Congratulations on the purchase of this device!** You will enjoy your Venen Engel very much! If you are satisfied with your Venen Engel, we would be very pleased if you submitted a review.

This guide includes details that should be taken into account by the user, to avoid risks, and to enable the safe use of the device.

Should you have any questions about its application, its accessories, or if you have suggestions, please do not hesitate to contact us! We are also happy to help you with any complications that develop during or after using the product.

**Telephone:** +49 (0) 666 17 48 91 05

**Whatsapp:** +49 1573 5990084

**Mail:** [service@venenengel.de](mailto:service@venenengel.de)

**Web:** [www.venenengel.de](http://www.venenengel.de)

**HelpDesk:** [help.venenengel.de](http://help.venenengel.de)

## BEFORE YOU GET STARTED

- Please read the operating instructions carefully before using the device.
- Keep this user manual so you can consult it, if necessary.
- Venen Engel may not be used if you suffer from certain health conditions. Please read the list of contraindications carefully on last page.

# APPLICATION

## STEP 1: BEFORE USE

### CONNECT AIR HOSES

Connect the set of hoses to the cuffs, starting with the dark gray connector, and then plugging the other gray connectors onto the appropriate counterparts.

**Note:** We recommend that you do not detach the connectors afterward.

Note: For users of combination sets with leg cuffs and belly cuff; the two long ends of the tube set correspond to the legs and the short end to the belly.



### Device Set-Up

Ensure that the device is securely placed. Also make sure that the device is free standing and not covered by a blanket, or similar. Do not use the device in damp rooms or those with high humidity, such as in saunas or bathrooms.

### Tightening Leg cuffs

To prevent contamination, we recommend wearing leggings or sweatpants when using the device. Empty your pockets before application!

The zippers on the cuffs must be completely closed to avoid the cuffs from suddenly splitting open and causing possible damage.

After plugging it into the power plug, putting on the cuffs, and tightening the zipper, the Venen Engel application controls on the control unit can be adjusted.

**Information:** Always make sure that the hoses are not kinked, and that you are not sitting on the hoses.

### Attaching the Multi-plug

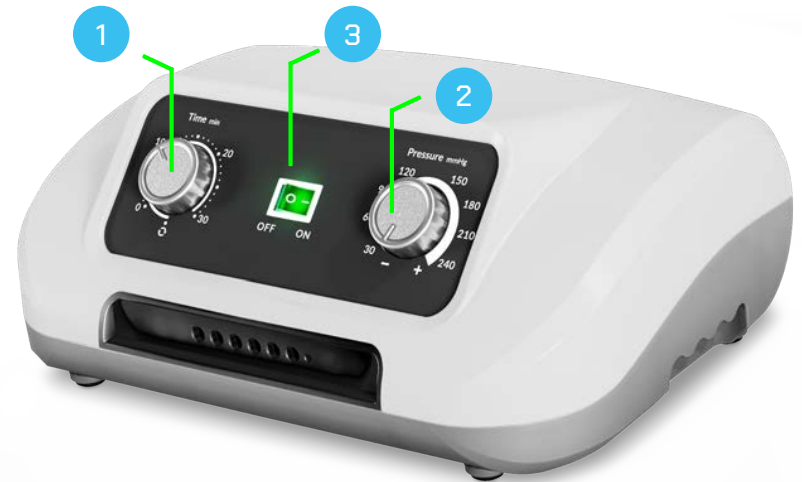
Plug the multi-plug into the front of the device as far as it will go. Be sure to insert the multi-plug into the device the right way (the small nipple into the small hole).



## STEP 2: CONTROL UNIT OPERATION

Follow the order as shown:

- 1 Select the pressure (30-240 mmHg). Start with a low setting. During the massage application, you may change the pressure.
- 2 Select duration of up to 30 minutes (a maximum of 5 minutes the first time, and then increase incrementally)
- 3 Turn the device on.



### STEP 3: ENJOY THE MASSAGE

The leg cuff air chambers inflate one by one. This creates an optimal gliding pressure wave massage for a relaxed feeling in both legs. Duration and pressure can be adjusted, even during the massage.

#### Massage programs:



#### **STEP 4: COMPLETION & DISMANTLING THE DEVICE**

After the set time has elapsed, or after pressing the off switch, you can unplug the multi-plug from the device. If you are not comfortable during the massage, you can also end the massage at any time, as you wish. After that you may open the cuff. To vent the air from the air cushions faster, after application, we recommend pushing the remaining air out of the cuffs with both hands, ensuring that the multi-plug is removed.

After application, we recommend leaving the grey cufflink plugs attached to the cuff and simply removing the multi-plug from the device. For storage, place the cuffs on top of each other and loosely roll them together with the attached hose set.

#### **SCHRITT 5: CLEANING AND STORAGE**

##### **Cleaning**

To clean the cuffs and the rest of the accessories, we recommend using a damp cloth. In case of heavy soiling, you can also use a gentle textile cleaner. Before cleaning the cuffs, remove the hose plugs and always allow the cuffs to dry thoroughly. When used by different people, we recommend disinfection of the cuffs, using a textile disinfectant spray. Use detergents and disinfectants free of oil, benzene, alcohol, gasoline, and/or chemical agents. Do not wash the cuffs in a washing machine or under running water. Switch off the unit before cleaning. Disinfectants such as Descosept pur or comparable products with a similar composition are suitable for disinfecting the cuffs.

##### **Storage**

Store the product at room temperature (minimum 10°C, maximum 40°C) and in well-ventilated, dry, and dust-free spaces (minimum 30%, maximum 85% relative humidity). Store the product in places free of frost, or it may damage the product.

Also be careful not to damage the cuffs during storage, especially if stored together with sharp objects such as scissors, or objects with sharp edges.

For long-term storage, we recommend that you store the product in the packaging you bought it in.

## TROUBLESHOOTING



help.uenenengel.de

### THE DEVICE DOES NOT TURN ON

If the device does not turn on, please check (A) whether the power plug has been correctly plugged into the socket and/or whether the device is turned on. If the unit is still not turning on, unplug the power plug (B) and unscrew the fuse holder with the inscription "FUSE" on the bottom of the unit (see picture on the left) completely (with a screwdriver or small coin) and check that the fuse inside is intact. (see picture on the right)..



The fuse is located on the bottom of the device



Intact fuse: the wire in the fuse is undamaged.

(C) If the fuse is intact, screw the fuse holder with the fuse back into the device completely. If the fuse is damaged, replace the fuse with a commercially-available fine fuse (TR); 3.15 A; 5 x 20 mm). You are also welcome to contact our customer service. (D) Note that the device may only be powered by 220V power.

### THE DEVICE IS PUMPING, BUT IT ONLY BLOWS ONE OR NONE OF THE TWO CUFFS

If only one or neither of the two cuffs should inflate after starting the application, please check (A) whether the multi-plug is fully and correctly inserted into the device. Also, make sure (B) that the air hoses are not kinked, for example, because you are sitting on the hoses. Check (C) that the gray cuff plugs are all correctly attached to the cuff.

### THE CUFFS ARE INFLATING IN THE WRONG ORDER

Make sure that the multi-plug is correctly inserted into the device. There is a small additional nipple, the multi-plug, which must be inserted into the hole provided for this purpose. If the multi-plug is inserted into the device the wrong way, the multi-plug will be placed crooked.



### MY VENEN ENGEL IS VERY LOUD

One should be able to talk or relax and chat with another person, without any issues, during the application. If this is not the case, due to the Venen Engel being too noisy, it is an indication that the transport screw on the bottom of the device has not yet been removed. Open the cover on the bottom and remove the safety screw with the enclosed screwdriver. The screw is only used for securing the device during transport, and it can subsequently be disposed of.

### YOU CAN HEAR AIR ESCAPING FROM THE DEVICE, HOSES ,OR CUFFS

- (A) Check the hoses and plugs for damage.
- (B) Check that the multi-plug is correctly plugged into the unit.
- (C) Check if the hose is bent or has been pulled off.



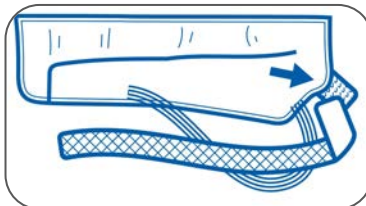
## Instruction for Accessories

### ATTACHING THE EXTENSION FLOP

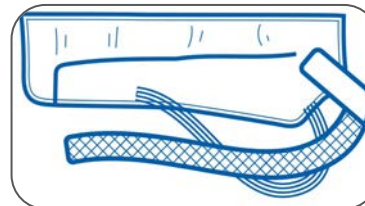


### PUTTING ON THE ARM CUFF

Step 1

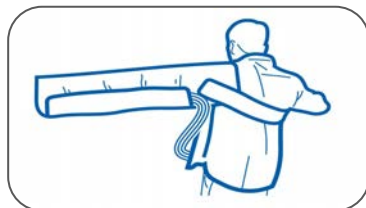


Step 2



Velcro the strap to the back of the cuff.

Step 3



Step 4



Pull the cuff onto your arm and make sure the end is sitting on your shoulder. Run the strap under your other arm and attach it to the front of the cuff.

### COMBINING ACCESSORIES

If you want to use other accessory cuffs, pay attention to the correct number of chambers in the cuff when buying. If you want to use several accessory cuffs at the same time, you can combine them as you like using the Quick Connectors. You can find more information about this at [help.venenengel.de](http://help.venenengel.de).

### PLACEMENT OF THE ABDOMEN CUFF

Apply so that it sits in a direct transition to the leg cuffs (top leg cuff bumps to the bottom chamber of the abdominal cuff; "side by side"). **Tip:** First put on the leg cuffs. Then lay the belly cuff flat behind you on the floor, lounger, or sofa (inside part facing up). Slowly lie down onto the stomach cuff, on your back. After pulling the abdominal cuff to the right height, close it over your stomach.

## COMBINING ACCESSORIES

If you want to use other accessory cuffs, pay attention to the correct number of chambers in the cuff when buying. If you want to use several accessory cuffs at the same time, you can combine them as you like using the Quick Connectors. You can find more information about this at [help.venenengel.de](http://help.venenengel.de).

## PLACEMENT OF THE ABDOMEN CUFF

Apply so that it sits in a direct transition to the leg cuffs (top leg cuff bumps to the bottom chamber of the abdominal cuff; "side by side"). **Tip:** First put on the leg cuffs. Then lay the belly cuff flat behind you on the floor, lounger, or sofa (inside part facing up). Slowly lie down onto the stomach cuff, on your back. After pulling the abdominal cuff to the right height, close it over your stomach.

## DISPOSAL

Note that the product contains small amounts of lead. For this reason, please ensure that the disposal carried out by an official electronic waste disposal service. important: Please do not dispose of the product via your general household waste disposal.

Alternatively: we are happy to take care of the disposal of your old Venen Engel free of charge. Just send it to:


Wellcosan GmbH  
Bellinger Tor 16a  
36396 Steinau a. d. Str.  
Germany

Please enclose a note with a request for disposal.



## TECHNICAL DETAILS

Programmes	1
Number of chambers	6
Weight	ca. 5 kg
Power output	30 W
Mains Frequency	50-60 Hz
Voltage	220-240 V
Programme Length	up to 30 Min.
Pressure	30-240 mmHg

Pump output	40l / Min.
Fuse	T 0,315 A H
Controller Dimensions	30x24x10 cm
Protection Class	II / 
Temperature range (use and storage)	10-40 °C
Humidity (relative, use and storage)	30-85%

## PACKAGE CONTENTS



Control unit



Compression boots

The scope of delivery of the boots depends on the set purchased



Power plug



Multi-Plug air hose set

## DISPOSAL

Note that the product contains small amounts of lead. For this reason, please ensure that the disposal carried out by an official electronic waste disposal service. important: Please do not dispose of the product via your general household waste disposal.

Alternatively: we are happy to take care of the disposal of your old Venen Engel free of charge. Just send it to:

**Wellcosan GmbH, Bellinger Tor 16a, 36396 Steinau a. d. Str., Germany**

Please enclose a note with a request for disposal.

## SAFETY INSTRUCTIONS

Keep these operating instructions in a safe place! Do not disassemble or burn the unit. Repairs to the control unit may only be carried out by specialists authorised by Wellcosan GmbH, otherwise the warranty may be voided. In case of damage to the unit, pull out the mains plug and switch off the unit. Also disconnect the mains plug and switch it off if the unit has come into contact with water or other liquids. Do not use the unit in damp rooms. Ensure that the unit is standing securely. Do not subject the device to shocks or throw them. The unit must not be covered by other objects during operation. Make sure that the hoses do not twist or kink during use and storage. Keep the unit away from sources of heat (e.g. direct sunlight, radiators and others). When you are not using the unit, the unit must be switched off. The unit switches itself off after 10 minutes of inactivity.

## WARRANTY

We grant 24 months on the control unit. In the event of a malfunction, it may be necessary to send the unit in for inspection. In this case, please ensure that the shipping carton is appropriately padded in order to avoid possible transport damage. Unfortunately, no warranty claims can be made for defects that are due to improper shipping. **Warranty conditions:** Insofar as there is a legal obligation to provide a warranty, either a replacement will be provided free of charge or the manufacturer will be given the opportunity to rectify the defect, to the exclusion of the right to rescission or reduction. Should the rectification of defects fail despite several attempts or should a replacement unit also be afflicted with a defect for which the manufacturer is responsible, the customer shall be entitled to rescission or reduction.

When not in use also unplug the appliance from the mains. Always unplug the appliance from the mains before cleaning. Keep the product away from children or persons who have not been instructed in its use.



With the CE marking, the manufacturer or importer confirms the conformity of the product with the applicable EC directives and compliance with the "essential requirements" specified therein.



This marking on the unit means that you must not dispose of it in normal household waste at the end of its service life. Please have it disposed of by an electronic waste disposal company.



The abbreviation UKCA stands for UK Conformity Assessed. The marking is a prerequisite for the marketing of products within Great Britain.



**Warranty exclusion:** Excluded from the warranty are defects caused by forcible damage, improper operation, external force or third party modification and repair measures, such as defects caused by incorrectly dimensioned or short-circuited fuses or defects attributable to normal wear and tear. **Warranty requirement:** The warranty claim exists only in conjunction with the original proof of purchase (invoice). Therefore, keep the purchase receipt in a safe place.

If you have any problems or questions when using the system, please do not hesitate to contact us at +49 (0) 666 17 48 91 05 or [service@venenengel.de](mailto:service@venenengel.de).

## LIABILITY DISCLAIMER

The product should ideally only be used after consultation with your doctor.

**Possible contraindications may include:** Decompensated heart failure, cardiac output disorders with water in the legs, inflammation of the treated areas of the body, known or suspected leg vein thrombosis, phlebitis and arterial disease, gangrene, dermatitis, arteriosclerosis or venous circulatory disorders, open, untreated or infected wounds and injuries, for leg pain, skin lesions, acute inflammation, malignant tumours, pulmonary oedema, hypertension, extensive thrombophlebitis, thrombosis or suspected thrombosis, erysipelas, severe uncontrolled hypertension, acute soft tissue trauma of the extremities, neuropathy or occlusive processes in the lymphatic drainage system.

**Purpose:** The product is designed to help you feel better and relax.

### NOTICE:

Your Venen Engel product is not a medical device and is not intended for self-treatment. If you are unsure, please consult your doctor.

### MANUFACTURER:

Wellcosan GmbH, Hauptstraße 27  
36381 Schlüchtern, Germany

Telephone: +49 (0) 666 17 48 91 05

Mail: [service@venenengel.de](mailto:service@venenengel.de)

Web: [www.venenengel.de](http://www.venenengel.de)

© Wellcosan GmbH 2022

